

# E-RAD BLU 8000-S

Part Number: 25282



**1.300 - 8.000 Nm**  
**MAX SPEED 4,5 RPM**  
**SERVO MOTOR**  
**DATA LOGGING**  
**TORQUE + ANGLE FUNCTION**  
**TRANSDUCER**  
**CONTROLLED SHUT OFF**

## SPECIFICATIONS

- **TORQUE RANGE:** 1.385 - 8.100 Nm
- **SPEED:** 4,5 RPM
- **WEIGHT:** 14,1 Kg, excluding reaction arm and impact socket
- **SQUARE DRIVE:** 1½ inch square drive
- **NOISE LEVEL:** Maximum 80 dB
- **PASSWORD PROTECTION:** Three user levels
- **LED INDICATOR LIGHTS:** Pass/Fail
- **REPEATABILITY ON SAME JOINT\*:** +/- 2%.

\* Test results from certified calibration lab

## SUITABLE REACTION ARMS

**Standard**  
PN: 15840



**Deep socket**  
PN: 15788



**Double ended**  
PN: 15790



**Blank**  
PN: 16260



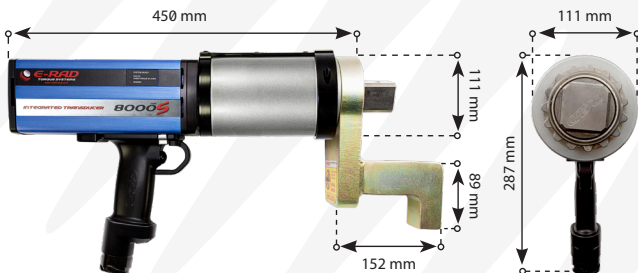
**Double ended blank**  
On request



**Safety sliding**  
On request



## DIMENSIONS IN MM



## TOOL KIT INCLUDING

- E-RAD BLU 8000-S
- Standard reaction arm (PN: 15840)
- Two retaining rings (PN: 15367)
- Control box 220V
- Controller cable 4,6 mtr
- Data logging software
- Calibration certificate
- Usermanual
- QR code for Safety instructions
- Weatherproof storage case.



## IMPERIAL VERSION

- **MODEL:** E-RAD BLU 6000-S
- **PART NUMBER:** N/A
- **TORQUE RANGE:** 1500 - 6000 ft/lbs
- **WEIGHT:** 34.6 lbs.



Non Impacting



Safe & Reliable



Bluetooth data exchange



Software managed



Torque + angle function



According to European standards



**LABORATORY ACCREDITATION BUREAU**  
ACCREDITED ISO/IEC 17025

Accredited ISO/IEC 17025

# ELECTRIC SERIES

## Accessories

### Impact Sockets

Prod. Nr.	Hex size	Square drive	Bolt size	Suitable for
200189	22MM	3/4"	M14	E-RAD BLU 950-S
200190	24MM	3/4"	M16	E-RAD BLU 950-S
200210	27MM	3/4"	M18	E-RAD BLU 950-S
200211	30MM	3/4"	M20	E-RAD BLU 950-S
200212	32MM	3/4"	M22	E-RAD BLU 950-S
200004	36MM	3/4"	M24	E-RAD BLU 950-S
200215	38MM	3/4"	M24	E-RAD BLU 950-S
200005	41MM	3/4"	M27	E-RAD BLU 950-S
200227	36MM	1"	M24	E-RAD BLU 2000-S, 3400-S & 4000-S
200229	41MM	1"	M27	E-RAD BLU 2000-S, 3400-S & 4000-S
200230	46MM	1"	M30	E-RAD BLU 2000-S, 3400-S & 4000-S
200007	50MM	1"	M33	E-RAD BLU 2000-S, 3400-S & 4000-S
200008	55MM	1"	M36	E-RAD BLU 2000-S, 3400-S & 4000-S
200009	60MM	1"	M39	E-RAD BLU 3400-S & 4000-S
200238	55MM	1 1/2"	M36	E-RAD BLU 8000-S
200297	60MM	1 1/2"	M39	E-RAD BLU 8000-S & 10K-S
300052	70MM	1 1/2"	M45	E-RAD BLU 8000-S, 10K-S & 15K-S
200197	75MM	1 1/2"	M48	E-RAD BLU 8000-S, 10K-S & 15K-S
200241	80MM	1 1/2"	M49	E-RAD BLU 8000-S, 10K-S & 15K-S
200298	90MM	1 1/2"	M52	E-RAD BLU 10K-S & 15K-S
200435	80MM	2 1/2"	M52	E-RAD BLU 15K-S
200247	90MM	2 1/2"	M52	E-RAD BLU 15K-S
200437	100MM	2 1/2"	M52	E-RAD BLU 15K-S
200438	110MM	2 1/2"	M52	E-RAD BLU 15K-S



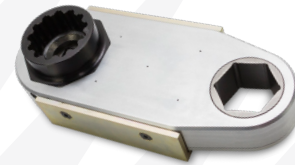
### CX Offset Gearboxes

Prod. Nr.	Gearbox
27978	Hex 50 mm
28540	Hex 65 mm

Prod. Nr.	Suitable for	Gearbox
16155	E-RAD BLU 950-S	27978
26994	E-RAD BLU 2000-S	27978
13034	E-RAD BLU 3400-S	27978
28532	E-RAD BLU 3400-S	28540
27853	E-RAD BLU 4000-S	27978
28531	E-RAD BLU 4000-S	28540

Hex reducer on request.



### Nose extension series

Prod. Nr.	Gearbox	Length
14195	E-RAD BLU 950-S	324 mm
14200	E-RAD BLU 950-S	400 mm
14205	E-RAD BLU 950-S	476 mm
18185	E-RAD BLU 2000-S	349 mm
19058	E-RAD BLU 2000-S	400 mm
19059	E-RAD BLU 2000-S	476 mm
12096	E-RAD BLU 3400-S	330 mm
12061	E-RAD BLU 3400-S	406 mm
12097	E-RAD BLU 3400-S	470 mm
11750	E-RAD BLU 4000-S	318 mm
11751	E-RAD BLU 4000-S	394 mm
11752	E-RAD BLU 4000-S	470 mm



### Trigger guard for E-RAD

Prod. Nr.	Model
21889	E-RAD safety trigger guard



### E-RAD Two Handed Safety Button

Prod. Nr.	Model
28797	E-RAD 950-S, 2000-S & 3400-S
28795	E-RAD 4000-S, 8000-S, 10K-S & 15K-S

