



1.620 - 16.200 Nm

DATA LOGGING

BLUETOOTH CONNECTIVITY

RECHARGEABLE BATTERY

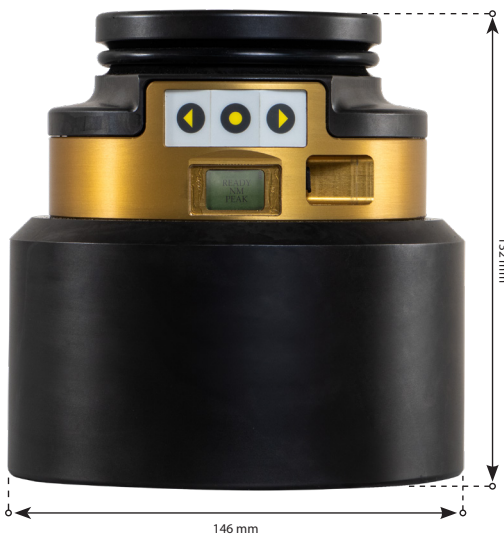
CONNECTIVITY WITH E-RAD

## SPECIFICATIONS

- **TORQUE RANGE:** 1.620-16.200 Nm
- **WEIGHT:** 7 Kg
- **SQUARE DRIVE:** 1½" inch square drive
- **BATTERY:** Built-in rechargeable li-ion battery
- **CONNECTIVITY:** Bluetooth
- **DATALOGGING:** Download logs (XLS, CSV, PDF)
- **TRACKING:** Pass & Fail, Track and Peak
- **CERTIFICATION:** According to ISO 17025
- **MAXIMUM DEVIATION:** +/- 1%\*

\*Test results from RAD's certified calibration lab

## DIMENSIONS IN MM



## RAD CONNECT - PRODOCS

- Tool info
- Stored logs
- Torque graphs
- Process job
- Peak torque
- Export log as .CSV file.



## TOOL KIT INCLUDING

- Smart Socket™ 12K / 16K
- Locking pin and o-ring
- Weatherproof storage case
- Preinstalled tablet with RAD Connect – PRODOCS App
- Calibration certificate
- User manual.



## ACCESSOIRES

Product	Part number
Magnetic Hex Reducer 100 mm -> 60 mm	300133
Magnetic Hex Reducer 100 mm -> 80 mm	300134

## IMPERIAL VERSION

- **MODEL:** Smart Socket™ 12K
- **PART NUMBER:**
- **TORQUE RANGE:** 12.000 - 16.200 ft. lbs.
- **WEIGHT:** lbs.



Safe & Reliable



Lithium-ion battery



According to European standards



Bluetooth connectivity



Software data exchange



Accredited ISO/IEC 17025