

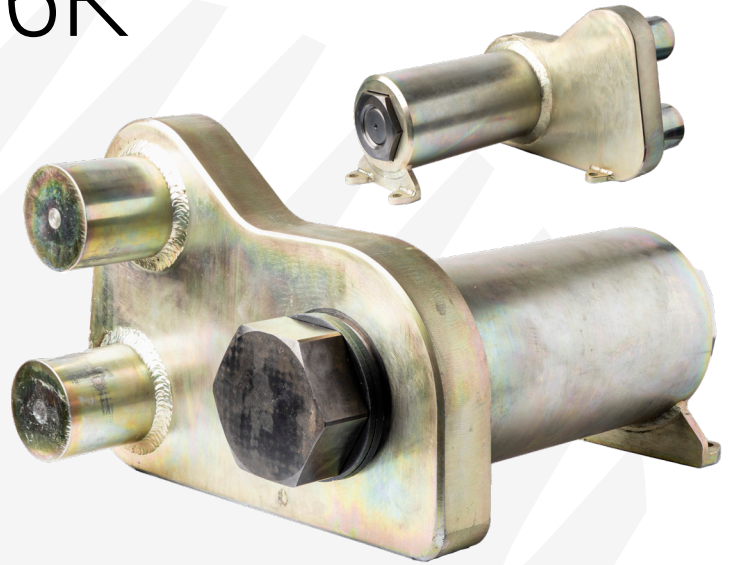
LARGE CALIBRATION

SYSTEM 12K / 16K

Part Number: **30526**

Designed for larger RAD Torque tools, the 12K / 16K Large Calibration System includes a stand and a 12K / 16K Smart Socket™, and features a rundown fixture designed and produced to accurately calibrate RAD Torque tools up to 16.200 Nm.

This calibration system is engineered for strength and durability. A special shipping crate also comes with the stand.

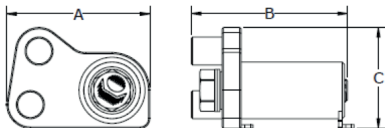


TOOL	REACTION ARM*
RAD 80 DX	23144 - cast
E-RAD BLU 10K	23144 - cast
B-RAD X 10K	23144 - cast
RAD 110 DX	23776 - standard 25664 - cast
E-RAD BLU 15K	23776 - standard 25664 - cast

* Not included.

12K / 16K SMART SOCKET™ 1½" SQUARE DRIVE

DIMENSIONS IN MM		
DIMENSION A	DIMENSION B	DIMENSION C
383 mm	501 mm	270 mm



TOOL KIT INCLUDING

- RAD Smart Socket™ 100 mm / 16.200 Nm
- Tube Style bench
- Simulation joint
- Washers
- Optional Android tablet
- ISO 17025 accredited calibration certificate

SPECIFICATIONS

- **TORQUE RANGE:** 1.620 - 16.200 Nm
- **WEIGHT:** 106,6 Kg
- **SQUARE DRIVE:** 1½" square drive
- **REPEATABILITY ON SAME JOINT*:** +/- 1%.

