

LARGE CALIBRATION

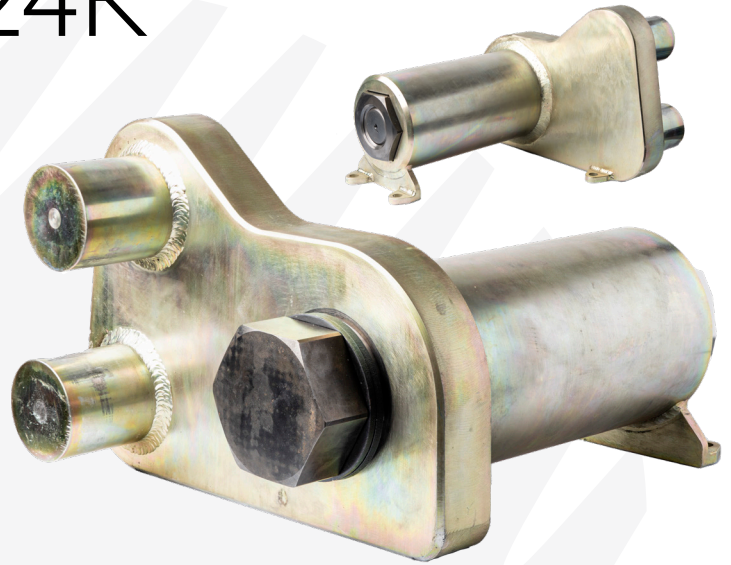
SYSTEM 18K / 24K

Part Number: **33736**

Designed for larger RAD Torque tools, the 18K / 24K Large Calibration System includes a stand and a 18K / 24K Smart Socket™, and features a rundown fixture designed and produced to accurately calibrate RAD Torque tools up to 24.000 Nm.

This calibration system is engineered for strength and durability. A special shipping crate also comes with the stand.

The 18K / 24K Smart Socket™ must be used with deep reaction arm, see below.



18K / 24K SMART SOCKET™ 2½" SQUARE DRIVE

TOOL

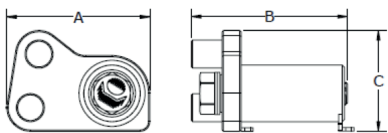
REACTION ARM*

B-RAD X 15K	34947 - deep
E-RAD BLU 15K	34947 - deep
RAD 110 DX	34947 - deep

* Not included.

DIMENSIONS IN MM

DIMENSION A	DIMENSION B	DIMENSION C
383 mm	501 mm	270 mm



TOOL KIT INCLUDING

- RAD Smart Socket™ 100 mm / 24.400 Nm
- Tube Style bench
- Simulation joint
- Washers
- Optional Android tablet
- ISO 17025 accredited calibration certificate

SPECIFICATIONS

- **TORQUE RANGE:** 2.440 - 24.400 Nm
- **WEIGHT:** 106,5 Kg
- **SQUARE DRIVE:** 2½" square drive
- **REPEATABILITY ON SAME JOINT*:** +/- 1%.



Class 1 Division
2 group A, B, C, D T4



Accredited
ISO/IEC 17025

2024 - V.01 If there are any doubts or questions about the information in this document, please contact Radial Torque Tools. The information in this document is subject to change without notice, no rights may be derived from its content.



WWW.RADIALTORQUE.EU